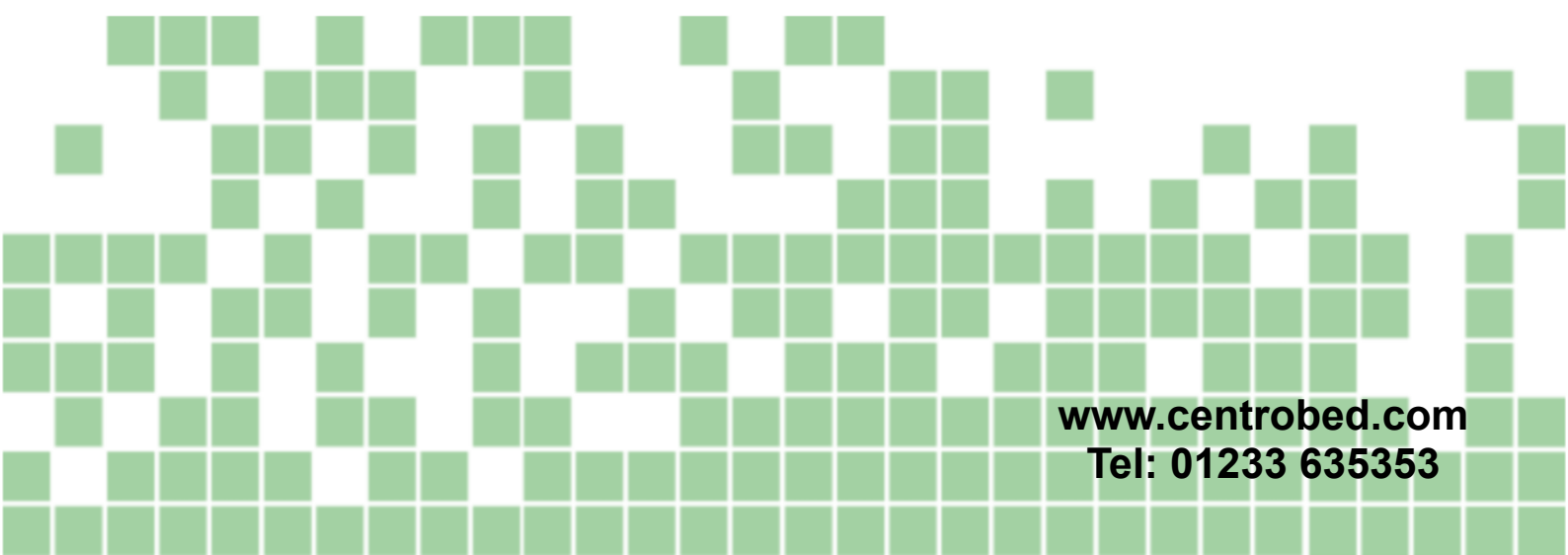




# Centrobed

Ultimate Pillow Lifter



[www.centrobed.com](http://www.centrobed.com)

Tel: 01233 635353

# INSTRUCTIONS FOR USE

## Equipment

To set up the equipment you will need the following:

Ultimate Under Mattress Frame, complete with actuator, handset, and 3 straps with buckles. All of these are supplied by Centrobed. Insert the plug from the actuator into the 4-pin socket of the black T-piece connector as marked below. Then insert the plug from the handset into the other, 5-pin socket of the black T-piece connector as marked below. The T-piece connector is connected to the transformer which will have a 3 pin mains plug on the end of it, this needs to be plugged into a mains outlet which is then switched on. The straps and buckles will normally come already attached.

Actuator connection symbol.

This end has a 4 pin socket.



Handset connection symbol.

This end has a 5 pin socket.

## Fitting

The frames can be fitted to almost any bed by means of straps and buckles supplied with the frame. To fit the Ultimate Under Mattress to the bed, it will be necessary to remove the mattress itself. Fit the frame on top of the base of the bed at the head end, ensuring that the slightly raised end of the Ultimate Under Mattress is at the head-most end of the bed. The two straps that are fitted to the lower frame should be looped underneath the sides of the whole bed and attached to the buckles on the other side. Then pull the straps tight. If the Ultimate Under Mattress is being fitted to a bed with slats, it may be better to strap the frame the other way. This will mean removing the straps from the sides of the frame and positioning them as shown in the image on the next page.

The third strap is to stop the mattress sliding down the bed. This needs to be secured around the mattress. If the bed has a footboard, the third strap can be ignored [removed if required]. The footboard stops the mattress sliding down the bed.

Top of bed.



Strap positioning for slated bed

Side of bed

Please note the slats must be firmly fixed to the bed

## Using your Ultimate Mattress

The handset is a low voltage device, which uses 24V D.C. to activate the main switches, which are located inside the control unit. It has two buttons, the top one to raise the Ultimate Under Mattress and a bottom one to lower the Ultimate Under Mattress. When the Frame reaches 80° the control unit will operate a safety device stopping it from raising any further.

## Application

The Ultimate Under Mattress is a fully portable device for people who experience problems getting in and out of bed or getting to a sitting position. The Ultimate Under Mattress is easily fitted to beds and can support a patient in variable positions for added comfort.

## Variants

The frame comes in two widths 680 mm [27 inches] or 910 mm [32 inches]. The Ultimate Under Mattress is also available with an Environmental Control option for connection to Possum or Fox environmental control systems [ECS].

## Servicing

The Ultimate Under Mattress should be serviced annually and a PAT electrical safety test should be done during that service.

## Back up batteries

The Ultimate Under Mattress has a pair of batteries in the handset which have enough power to lower the frame [once] should mains power fail. If they are used, the handset batteries must be replaced.

## Repairs

*Note: If this equipment was supplied by Centrobed, you may contact us on the details given towards the back of this manual. If the equipment was supplied to you by another company, please contact this supplying company with regards to repairs.*

## Safety Warning

When using the Ultimate Under Mattress please ensure you are aware of the risk to people, animals and especially children etc when lowering the device. This unit is mains powered. Ensure it is disconnected from the mains before commencing work. *See using your Ultimate Under Mattress.*

## Parts available from Centrobed

CODE	PART DESCRIPTION
TBA	Ultimate Under Mattress Handset
298	Ultimate Under Mattress Frame
296 or 188	Ultimate Under Mattress Actuator
299	Ultimate Under Mattress Frame Wide

## Repair flow chart explanations

A. Does the Ultimate work when the buttons are pressed? If the Ultimate only works when one of the buttons is pressed, replace the handset as per section B. If neither button operates, change the actuator as per section D.

B. Undo the screw holding the handset cable to the actuator and unplug the handset. To re-fit the handset, plug the DIN connector into the actuator and re-fit the screw.

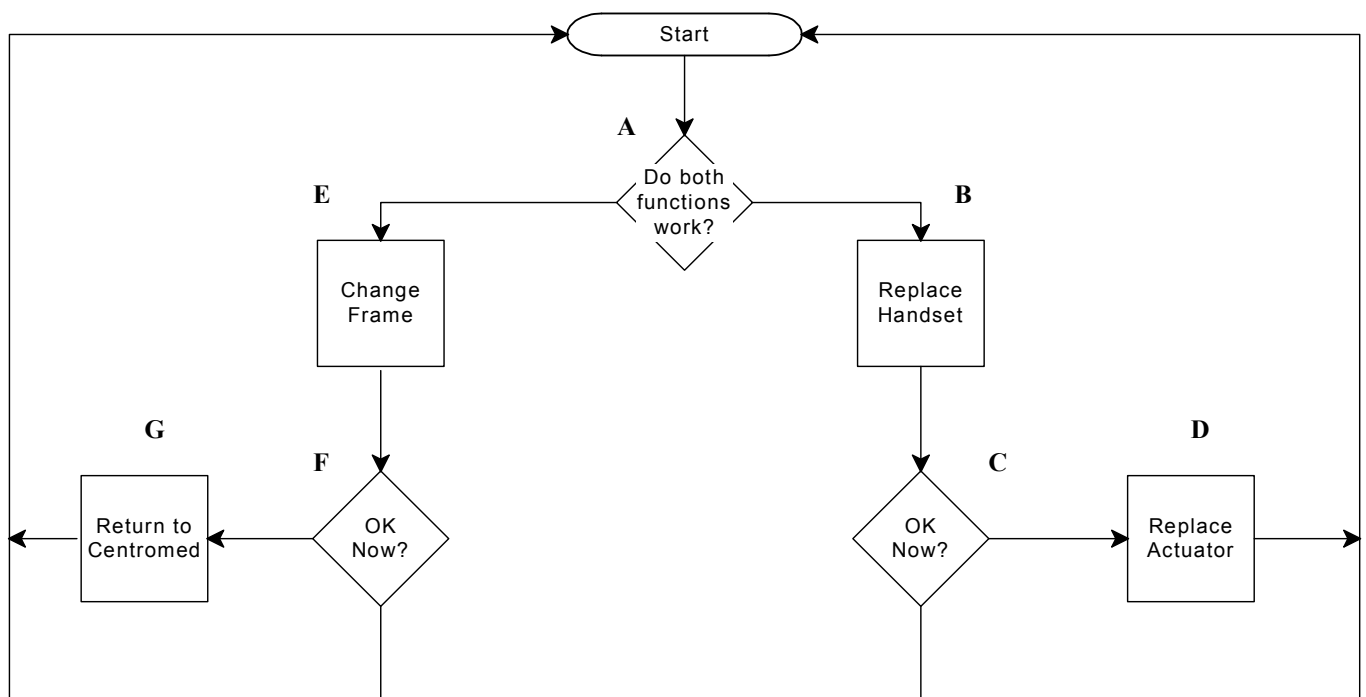
C. Does the actuator work when each button is pressed? If the actuator only works in one direction and the handset has been changed, replace the actuator as described below in section D.

D. To replace the actuator remove the 2 [two] Cotter pins and 2 [two] 'R' clips holding each end, and noting the orientation remove from the frame. It will be easier to do this with the frame in the open or up position. Place the new actuator in position [again it may be easier if the actuator is extended], re-fit the cotter pins and 'R' clips.

E. If there is any damage to the frame, it should be replaced. To do this, remove the actuator as described above in section D and refit it to the new frame, noting which way round it is fitted.

F. If the unit is still not operating correctly return as detailed below.

G. Return to: Returns dept, Centrobed Ltd, Anglo House, Wotton Road, Kingsnorth Industrial Estate, Ashford, Kent TN23 6LN England.



# TECHNICAL INFORMATION

## Specifications

Country of Origin	England
Name of Equipment	Ultimate Under Mattress
Description of Equipment	Bed Raising Aid
Weight of Equipment	[14 Kilos]
Voltage	230 V ~ [AC]
Power Supply Frequency	50 Hz
Power Consumption	0.6 A Peak
Power Consumption Stand-By	<1mA
Fuse In Plug	3A Mains Fuse
Class	II
Type	BF
Electrical Safety Standard	BS EN 60601-1
EMC Standard	BS EN 60601-1-2
Duty Cycle	20%

## Other important information

Class II means this equipment is double insulated.

Type BF is the level of patient protection this equipment gives.

This is ordinary equipment intended for indoor use only.

Do not use this equipment near explosive gases, anaesthetics etc.

Clean the frame with warm soapy water and allow to dry before use. To disinfect clean with alcohol based cleaner or anti-bacterial gel [see cleaning].

Centrobed Ltd or trained personnel should service this equipment once a year.

## Interference

Interference should not occur between this and other equipment, such as televisions, radios and other electronic equipment. If you have any interference involving your Ultimate Under Mattress, try relocating the it and / or the other equipment; also try to connect them on different mains circuits. Always use a main power surge protector.

## Transport And Storage

This equipment must be stored between 10°C to 50°C, 0% to 90% humidity and 800 hPa to 1060 hPa atmospheric pressure. This equipment should only be used between 5°C and 40°C, 0% to 90% humidity and 800 hPa to 1060 hPa atmospheric pressure.

## Recycling

Electronics should be recycled when you wish to dispose of your mattress variator. Otherwise return to Centrobed for environmental recycling.





## Contact information



**Telephone**  
**(44) 01233 635353**

**Facsimile**  
**(44) 01233 635351**

**Email**  
**sales@centrobed.com**

**Website**  
**www.centrobed.com**

**Anglo House, Wotton Road  
Kingsnorth Industrial Estate  
Ashford, Kent TN23 6LN, United Kingdom**

## Services

**Have your order delivered  
or have a factory trial\***

**Make use of our educational  
posters, videos & presentations**

**Hire products at  
affordable prices**

**Maintenance, repair & training courses available**

\* Only available on certain products