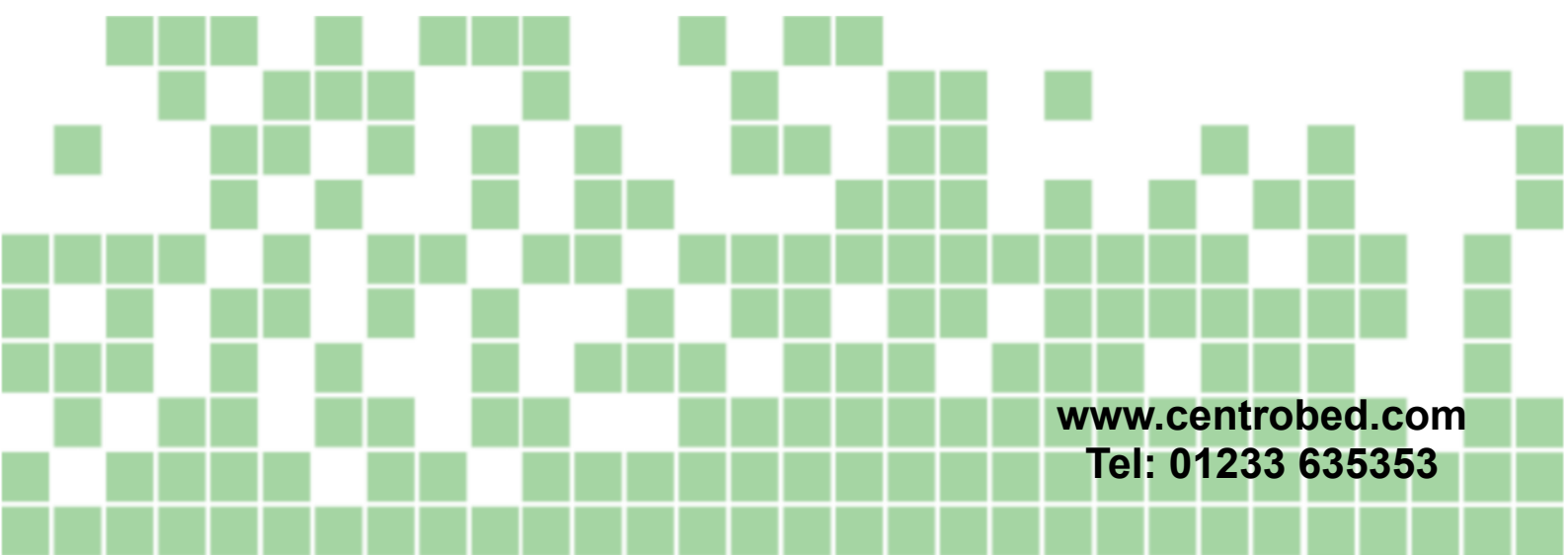




**QT 2000 Mattress Variator**



**[www.centrobed.com](http://www.centrobed.com)  
Tel: 01233 635353**

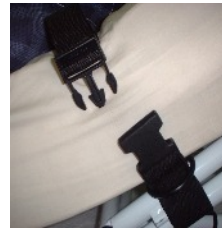
# INSTRUCTIONS FOR USE

## Equipment

To set up the equipment you will need the following:  
QT 2000 Mattress Variator Frame, Actuator and a Handset.  
All of these are supplied by Centrobed.  
The Frame could be any of the four standard sizes available for beds.

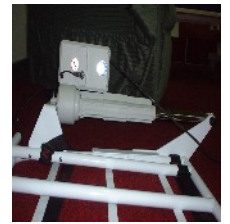
## Fitting

The QT2000 Mattress Variator will be supplied in one box. Once the box is opened, the QT2000 Mattress Variator can be lifted out and will look like this;

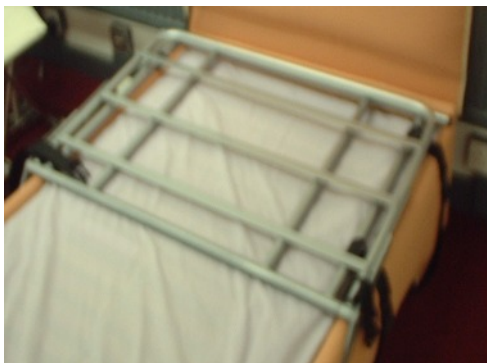


Example of buckle before connection

Example of buckle connected

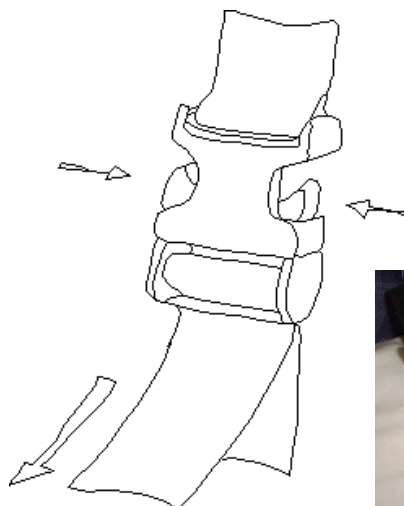


Example of actuator when frame is upside down.

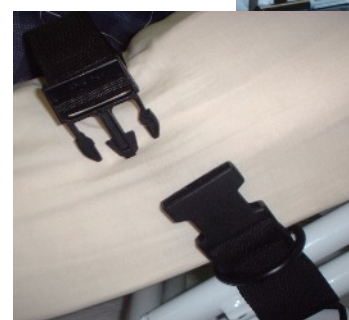
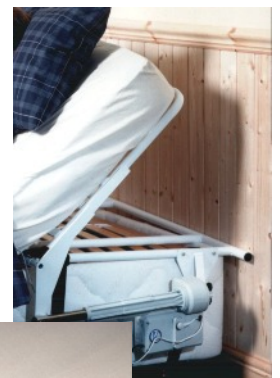


The frames can be fitted to almost any bed by means of straps and buckles supplied with the Frame. See diagrams for details. To fit the QT2000 Mattress Variator to the bed it will be necessary to remove the mattress itself. Fit the frame to the base of the bed at the head end. The frame sits flat on the bed with the actuator hanging over the side. The two straps that are fitted to the lower frame should be looped underneath the bed and attached to the buckles on the other side, and pulled tight.

Now the mattress should be replaced and the remaining strap (attached to the upper part of the frame), should be looped over the mattress, attached to the buckle on the other side and pulled tight. The frame is now fitted. Plug the black lead from the Actuator (motor arm) into a mains outlet which is then switched on.



Detail of Strap and Buckle.



## Repairs

*Note: If this equipment was supplied by Centromed, you may contact us on the details given towards the back of this manual. If the equipment was supplied to you by another company, please contact this supplying company with regards to repairs.*

## Safety Reports

This unit is mains powered. Ensure it is disconnected from the mains before commencing work. This unit is intended to be serviced by qualified personnel only.

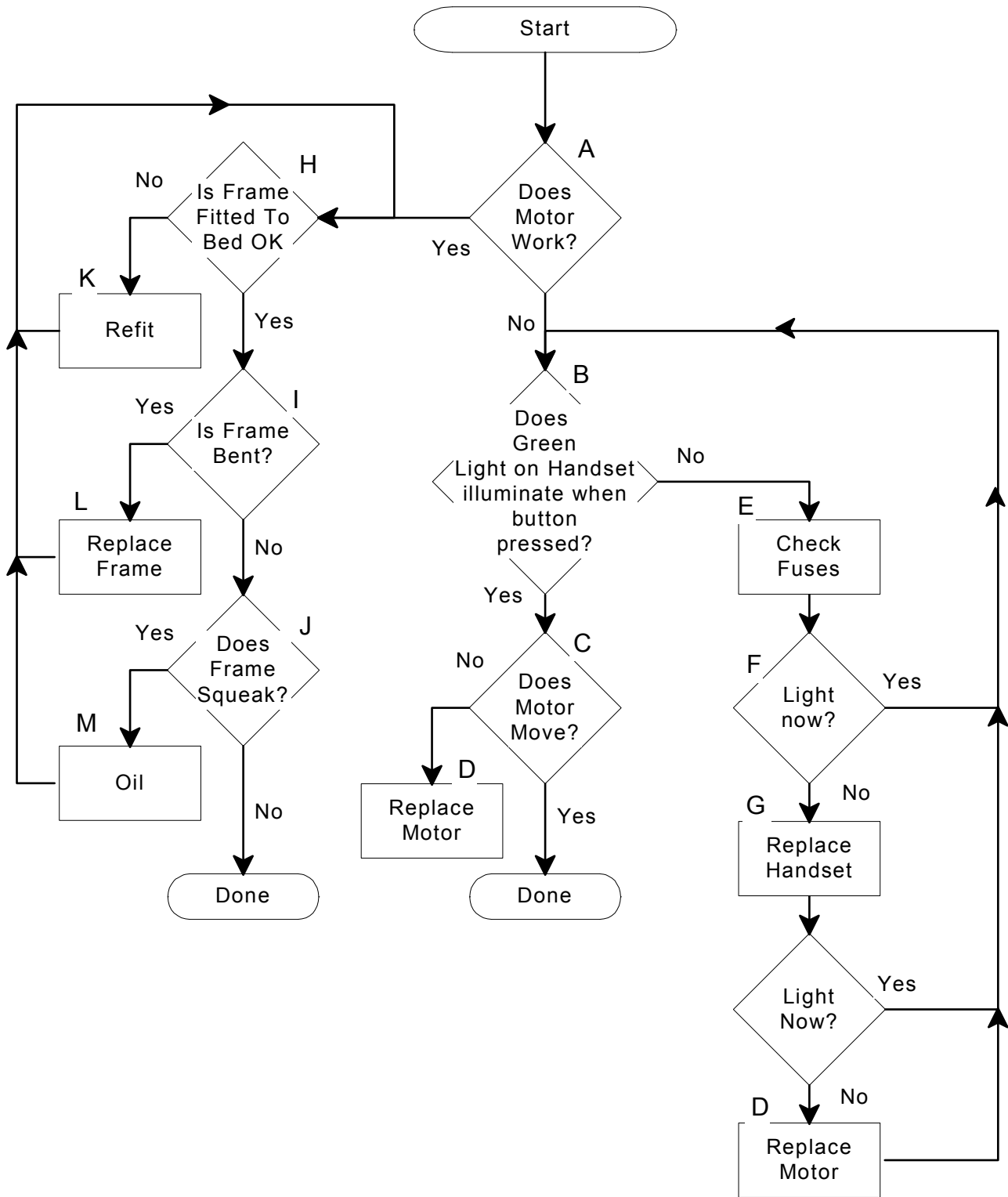
## Parts available form Centromed

125B	Qutee Frame Bracket	125Q	Qutee Frame Single
264	Decorative Nut Cap	126Q	Qutee Frame Double
265	Setscrew M10x40	137Q	Qutee Frame Three Quarter
266	Setscrew M10x50	185Q	Qutee Frame Kingsize
268	M10 Nyloc	285	Spanner for QT2000
274	M6 Nyloc	561/A	Saddle Washer
934	Cable Tie	129A	Plastic End Stop QT2000
267	M6x40 Hex Bolt	B	Buckle
PC	Pillow Clips	SS	Single Strap
294	Actuator QT	DS	Double Strap

## QT2000 unit flow repair chart explanations

- A. Does the motor move (or attempt to move) when a button is pressed on the handset? If yes, go to section H.
- B. Does the green light on the handset illuminate when a button is pressed? If not, go to section E.
- C. Does the motor move (or attempt to move) when a button is pressed on the handset? If it does and the QT200 is still not operating correctly, go to section H. If not, go to section D.
- D. To replace the actuator, undo the 2 (two) bolts holding each end and noting the orientation, remove it from the frame. Place the new actuator in position and re-fit the bolts.
- E. Check the fuses in the plug and replace if needed.
- F. Does the light in the handset illuminate now? If yes, go to section B.
- G. Replace the handset. Does the light illuminate now? If No, go to section D.
- H. Is the frame fitted to the bed correctly? If not, go to section K.
- I. Is the frame bent? If it is, go to section L.
- J. Does the frame squeak? If not, all should be working. If not, go to section N.
- K. Refit the frame as per fitting instructions in this instruction manual.
- L. Replace frame. Simply order the part or parts of the frame that you require from Centromed (ensuring you order the correct size), remove actuator from old frame and replace bent part with new part, then re-fit actuator. Instruction for how to remove & re-fit the actuator are in this instruction manual under the section \*.
- M. Oil the frame at it's hinges.
- N. If the unit is still not operating correctly, return as detailed below.
- O. Return to: Returns dept, Centromed Ltd, Anglo House, Wotton Road, Kingsnorth Ind. Est. Ashford, Kent TN23 6LN England

# QT2000 unit flow repair chart



## Technical information

### Specifications

Country of Origin . . . . .	England
Name of Equipment . . . . .	QT2000 Mattress Variator
Description of Equipment . . . . .	Bed Raising Aid
Weight of MV/1QE . . . . .	11.5 Stone (73 Kilos)
Weight of MV/2QE . . . . .	18 Stone (114.5 Kilos)
Weight of MV/2QE . . . . .	15 Stone (95 Kilos)
Weight of MV/2QE . . . . .	20 Stone (127 Kilos)
Weight Limit of MV/1QE & MV/3QE . . . . .	25 Stone (158 Kilos) Upper Body Weight
Weight Limit of MV/2QE & MV/4QE . . . . .	40 Stone (254 Kilos) Upper Body Weight
Voltage . . . . .	230 V ~ (A.C.)
Power Supply Frequency . . . . .	50 Hz
Power Consumption . . . . .	2 A Peak
Power Consumption Stand-By . . . . .	<1mA
Fuse . . . . .	5A Mains Fuse
Class . . . . .	II
Type . . . . .	BF
Electrical Safety Standard . . . . .	BS EN 60601-1
EMC Standard . . . . .	BS EN 60601-1-2
Duty Cycle . . . . .	20%

### Other important information

Class II means this equipment is double insulated. Type BF is the level of patient protection this equipment gives. This is ordinary equipment intended for indoor use only. Do not use this equipment near explosive gases, anaesthetics etc. Clean this frame with warm soapy water and allow it to dry before use. Clean the actuator with a slightly damp cloth.

### Interference

Interference should not occur between this and other equipment, such as televisions, radios and other electronic equipment. If you have any interference involving your QT2000 Mattress Variator, try relocating the QT2000 Mattress Variator and / or the other equipment, also try to connect them on different mains circuits.

### Recycling

There are no toxic components inside your QT2000 Mattress Variator, so it can be disposed of quite safely in the normal manner. Alternatively it can be returned to Centromed for recycling. The life expectancy of this equipment is about five years.





## Contact information



**Telephone**  
**(44) 01233 635353**

**Facsimile**  
**(44) 01233 635351**

**Email**  
**sales@centrobed.com**

**Website**  
**www.centrobed.com**

**Anglo House, Wotton Road  
Kingsnorth Industrial Estate  
Ashford, Kent TN23 6LN, United Kingdom**

## Services

**Have your order delivered  
or have a factory trial\***

**Make use of our educational  
posters, videos & presentations**

**Hire products at  
affordable prices**

**Maintenance, repair & training courses available**