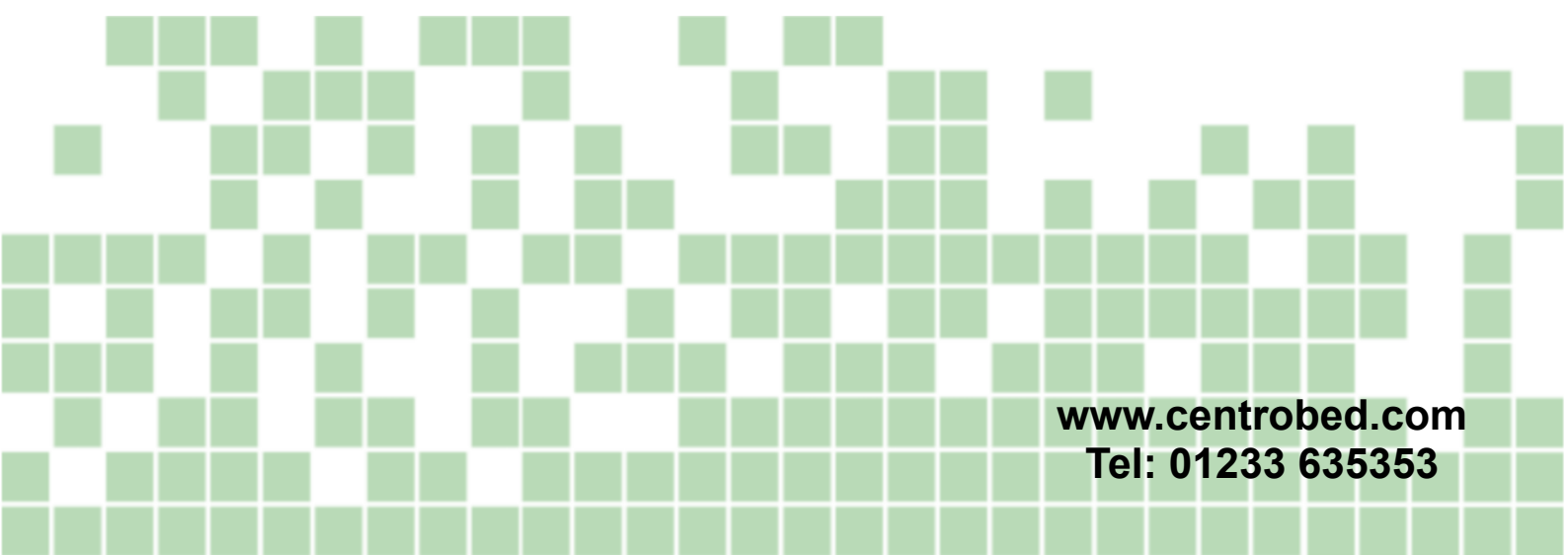




Alaska Mattress Variator



**www.centrobed.com
Tel: 01233 635353**

INSTRUCTIONS FOR USE

Equipment installation instructions

To set up the equipment you will need the following:

Alaska mattress variator frame, actuator and a handset. All of these are supplied by Centrobed Ltd. The frame could be any of the three sizes to fit most beds.

Fitting

The Alaska Mattress Variator will be supplied in one box. Once the box is opened, the Alaska Mattress Variator can be lifted out and will look like this:



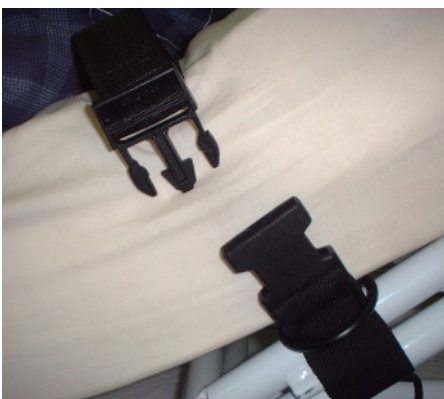
Handset

Actuator [motor arm]

Strap

Buckle

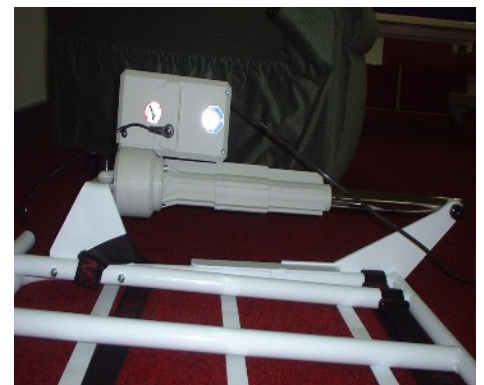
Transformer



Example of buckle before connection



Example of buckle connected

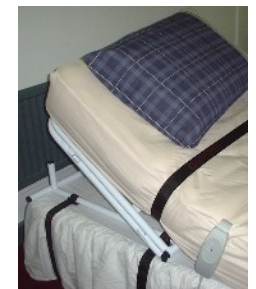
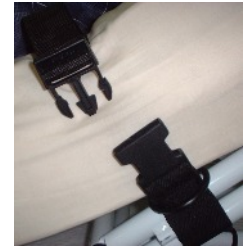
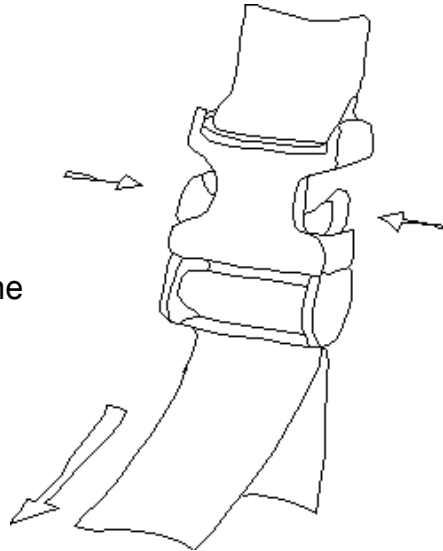


*Example of actuator when frame is lifted.
Note white handset lead.*

The frames can be fitted to almost any bed by means of straps and buckles supplied with the frame. To fit the Alaska Mattress Variator to the bed it will be necessary to remove the mattress itself. Fit the frame on top of the base of the bed at the head end, ensuring that the slightly raised end of the Alaska Mattress Variator is at the head-most end of the bed and the fold out wings are on the top. The two straps that are fitted to the lower frame should be looped underneath the whole bed and attached to the buckles on the other side. Then pull the straps tight.



Now the mattress should be replaced and the remaining strap [attached to the upper part of the frame], should be looped over the mattress, attached to the buckle on the other side and pulled tight. The frame is now fitted. Plug the black lead from the Actuator [motor arm] into a mains outlet which is then switched on.



Detail of strap and buckle

Actuator connection symbol

Handset connection symbol

This end has a 4 pin socket

This end has a 5 pin socket



Insert the plug from the actuator into the 4-pin socket of the black T-piece connector as marked above. Then insert the plug from the handset into the other 5-pin socket of the black T-piece connector as marked above. The T-piece connector is connected to the transformer which will have a 3-pin mains plug on the end of it, this needs to be plugged into a mains outlet which is then switched on.

Using your Alaska Mattress Variator

The handset is a low voltage device which uses 12 volts to activate the main switches, which are located inside the control unit. It has two buttons, one to raise the Alaska Mattress Variator and one to lower it. When the Alaska Mattress Variator reaches 90° the frame reaches a limit switch, stopping it from raising any further. The Alaska Mattress Variator can be safely positioned anywhere between its flattest position, up to 90° for any period of time.

Application

The Alaska Mattress Variator is a fully portable device for people who experience problems getting in and out of bed or getting to a sitting position. The Alaska Mattress Variator is easily fitted to beds, and can support a patient in variable positions for added comfort.

Variants

The Alaska Mattress Variator is available in a special version. This special version includes an environmental control option for connection to Possum or Fox Environmental Control System [ECS].

Frame Options

The Alaska Mattress Variator standard single bed size is 910mm [36"], the standard three quarter bed size is 1140mm [45"] and the standard double bed size is 1370mm [54"].

Cleaning

The Alaska Mattress Variator can be used in a variety of different environments; this must be taken into consideration when deciding on the cleaning regime. Cleaning should start with a damp cloth to remove any large deposits of dirt, and then everything should be disinfected with an anti-bacterial gel or alcohol based cleaner. This mattress variator is intended to be recycled [cleaned, serviced and reused].

Servicing

The Alaska Mattress Variator should be serviced annually and a PAT electrical safety test should be done during that service.

Repairs

Repairs to this equipment should only be carried out by, or under the supervision of, a suitable trained engineer. Please contact the provider of the equipment [your Occupational Therapist / District Nurse] to arrange for any repairs.

Note: If this equipment was purchased direct from Centrobed, you may contact us on the details given at end of this manual. If another organisation supplied this equipment to you, please contact them to arrange repairs.

Safety Warning

When using the Alaska Mattress Variator please ensure you are aware of the risk to people, animals and especially children etc when lowering the device. This unit is mains powered. Ensure it is disconnected from the mains before commencing work. *See using your Alaska Mattress Variator.*

Parts available from Centrobed

PART NUMBER	PART	PART NUMBER	PART
129A	Plastic End Stop	187	Alaska Frame
188	Actuator	265	Setscrew M10 x 40
268	M10 Nyloc	AR	Alaska Rod
B	Buckle	DS	Double Length Strap
HBE	Button Handset		

Alaska Mattress Variator flow chart explanations

A. Does the Alaska work when the buttons are pressed? If the Alaska only works when one of the buttons is pressed replace the handset as per section B. If neither button operates, change the actuator as per section D.

B. Undo the screw holding the handset cable to the actuator and unplug the handset. To re-fit the handset, plug the DIN connector into the actuator and re-fit the screw.

C. Does the actuator work when each button is pressed? If the actuator only works in one direction and the handset has been changed, replace the actuator as describe below in section D.

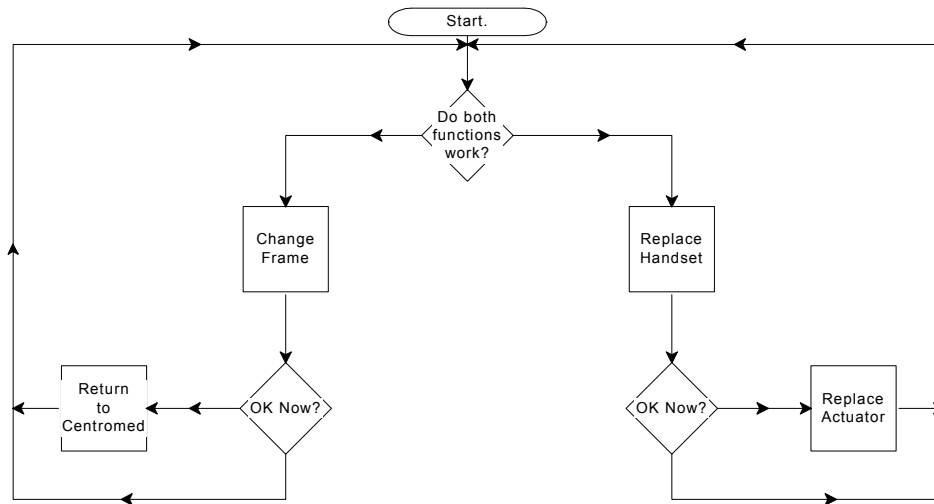
D. To replace the actuator undo the 2 [two] bolts holding each end and noting the orientation, remove it from the frame. It may be easier to do this with the frame in the open or up position. Place the new actuator in position and re-fit the bolts.

E. If there is any damage to the frame, it should be replaced. To do this, remove the actuator as described above in section D and refit it to the new frame. Noting which way round they are fitted, remove the straps and buckles and re-fit them to the new frame.

F. If the unit is still not operating correctly, return as detailed below.

G. Return to: Returns dept, Centrobed Ltd, Anglo House, Wotton Road, Kingsnorth Industrial Estate, Ashford, Kent TN23 6LN England.

Alaska Mattress Variator repair flow chart



Technical information

Specification

Country of Origin	England
Name of Equipment	Alaska Mattress Variator
Description of Equipment	Bed Raising Aid
Weight of Equipment	18.5 kg [117.5 Kilos]
Weight Limit of Equipment	20 kg [27 Kilos] Upper Body Weight
Voltage	230 V ~ [AC]
Power Supply Frequency	50 Hz
Power Consumption	2 A Peak
Power Consumption Stand-By	<1mA
Fuse	5A Mains Fuse
Class	II
Type	BF
Electrical Safety Standard	BS EN 60601-1
EMC Standard	BS EN 60601-1-2
Duty Cycle	20%

Other important information

Class II means this equipment is double insulated.
 Type BF is the level of patient protection this equipment gives.
 This is ordinary equipment intended for indoor use only.
 Do not use this equipment near explosive gases, anaesthetics etc.
 Clean the frame with warm soapy water and allow to dry before use. To disinfect clean with alcohol based cleaner or anti-bacterial gel [see cleaning].
 Centrobed Ltd or trained personnel should service this equipment once a year.

Transport & Storage

This equipment must be stored between 10°C to 50°C, 0% to 90% humidity and 800 hPa to 1060 hPa atmospheric pressure. This equipment should only be used between 5°C and 40°C, 0% to 90% humidity and 800 hPa to 1060 hPa atmospheric pressure.

Interference

Interference should not occur between this and other equipment, such as televisions, radios and other electronic equipment. If you have any interference involving your Alaska Mattress Variator, try relocating the it and / or the other equipment; also try to connect them on different mains circuits. Always use a main power surge protector.

Recycling

Electronics should be recycled when you wish to dispose of your Alaska Variator. Otherwise return to Centrobed for environmental recycling.

Contact information



Telephone
(44) 01233 635353

Facsimile
(44) 01233 635351

Email
sales@centrobed.com

Website
www.centrobed.com

Anglo House, Wotton Road
Kingsnorth Industrial Estate
Ashford, Kent TN23 6LN, United Kingdom

Services

Have your order delivered
or have a factory trial*

Make use of our educational
posters, videos & presentations

Hire products at
affordable prices

Maintenance, repair & training courses available